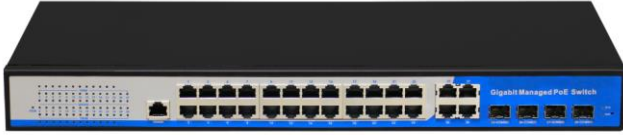


HR901-AFGM-2444S



- ◆ IEEE 802.3af/at power on up to 24 ports
- ◆ Supply power to wireless access points and surveillance cameras over Cat-5 cabling.
- ◆ 24* 10/100/1000M POE Ports + 4 * Gigabit Combo ports+1*Console port
- ◆ Supports PoE power up to 15.4W/30W for each PoE port
- ◆ Supports PoE power up to 300W/400W for all PoE ports
- ◆ Supports PoE IEEE 802.3af/at compliant PDs
- ◆ Supports IEEE 802.3x flow control for Full-duplex Mode and backpressure for Half-duplex Mode
- ◆ Layer 2 Management
- ◆ LED indicators for monitoring power, link, activity and speed
- ◆ Internal Power 400W

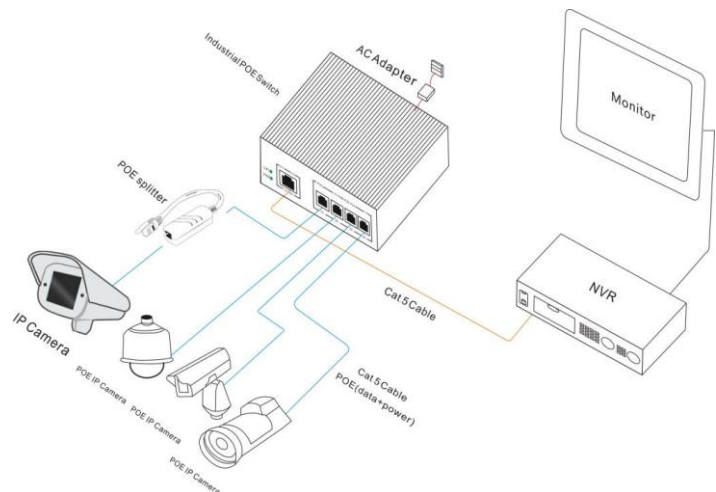
Product Description

The HR901-AFGM-2444S device is a PoE Switch ,it support 24* Gigabit POE Ports + 4 * Gigabit Combo ports+1*Console port. These converters are classified as power source equipment (PSE), and when used in this way provide up to 15.4 watts IEEE802.3af & 30 watts to IEEE802.3at compliant powered devices (PD), eliminating the need for additional wiring. It support CE, FCC ROHS standard, adopt industry standard design, IP30 protection, rugged high-strength metal case, power supply input (DC48-55V), -20 to 55°C working temperature. The converters support IEEE802.3/IEEE802.3u/IEEE802.3x with 10/100M, full/half-duplex, and MDI/MDI-X auto-sensing, providing a complete solution for your Ethernet network.

Target Industries

- 1.HD monitor transmission and power supply
- 2.Network telephone transmission , intelligent house and home system
- 3.Intelligent transportation supervisory system (ITS)
4. High-speed Way supervisory/Tele-Communication System
5. Security protection system, TV medical treatment
6. Long-distance Muti-media Schooling, Campus monitoring
7. Long-distance broadcast television transmission system
8. High-building Security Protection, Military Tele-Com project

Physical Application Reference



➤ **Order Information**

➤ **Product Model:** HR901-AFGM-2444S

➤ **Product Description:** 28 ports Poe Switch with 24* Gigabit POE Ports + 4 * Gigabit Combo ports , Poe Switch support power supply function, compatible with both IEEE802.3af/IEEE802.3at standard.Rack mount installation.

➤ **Pic Reference**

Accessories in the Package

Package List	POE Switch
	User Guide
	Warranty Card
	Power Cable

Product Dimension (44*29*4.5cm,Gross Weight:3.55kg)



Package Dimension (52*38*9.7cm,Gross Weight:4.3kg)

Technical Parameters

Product Name	28 Port Managed POE Switch
Product Model	HR901-AFGM-2444S
Interface	24*10/100/1000M POE ports + 4 Gigabit SFP/TP Combo ports, 1*Console port
Optical	Number of interface : 4 Connector: LC by default, SC optional Wave length:Depend on SFP ports
Electrical ports	Number of interface : 28 Connector: POE Rate: 10/100/1000M
Performance specification	Backplane bandwidth: 56Gbps (non-blocking) Packet forwarding rate: 40.32Mpps Packet Buffer Memory: 4.1M MAC address table: 8K
MTBF	100,000 hours
CPU	500MHZ
Switching	Store & Forward
Power Supply	AC 90~250V 50~60Hz Internal Power 400W
Transmission mode	Half/Full Duplex
Working temperature	-40°C~55°C
Storage temperature	-40°C~55°C
Software	
Network Protocols and Standards	IEEE 802.3i 10BASET; IEEE 802.3u 100BASETX; IEEE 802.3x Flow Control; IEEE 802.1af DTE Power via MDI; IEEE 802.3af
VLAN	Supports port-based VLAN Supports up to 4096 VLANs Supports 802.1Q standard VLAN
Spanning tree	Support STP spanning tree protocol Supports RSTP Rapid Spanning Tree Protocol Supports MSTP Rapid Spanning Tree Protocol
Link Aggregation	Supports 8 groups of aggregation, each group supports up to 8 ports
Port mirroring	Supports both side-way port mirroring
Loop protection	Support loop protection, real-time detection, rapid alarm, precise positioning, intelligent blocking, automatic recovery
Port isolation	Support the downlink port isolation, and can communicate with the uplink port
Port flow control	Half-duplex based on back pressure control Full duplex based on PAUSE frame
Port speed limit	Supports port-based input / output bandwidth management
Multicast control	IGMPv1 / 2/3 and MLDv1 / 2 snooping

	Support GMRP registration
	Multicast address management, multicast VLAN, multicast routing port, and static multicast address
DHCP	DHCP snooping
Storm suppression	Supports unknown unicast, multicast, unknown multicast, broadcast type storm suppression Storm suppression based on bandwidth regulation and storm filtering
QOS	802.1p port queue priority algorithm Cos / Tos, QOS mark WRR (Weighted Round Robin), Weighted Priority Rotation Algorithm Support WRR, SP, WFQ three priority scheduling mode
Network management	Support WEB interface management CLI management based on Telnet and Console SNMP V1 / V2 / V3 management
Security	User port+IP address+MAC ACL based on IP and MAC Security properties of port based MAC address quantities
Warranty	2 Years